



**West Sussex Contextual Safeguarding**

# **Steering Group Governance & Terms of Reference**

UNRESTRICTED

Produced by Claire Clilverd

October 2020

## CONTEXTUAL SAFEGUARDING

Traditionally, the focus of children's safeguarding has been on risks to children which exist within a family context such as domestic abuse or neglect. However, Contextual Safeguarding recognises that adolescent children spend increasingly greater amounts of time outside the family and in other 'contexts' (neighbourhoods, retail centres, parks and open spaces etc). These are often outside of the influence of families but can have an effect on them.

We refer to these as Extra Familial Risks or Harms and can include youth violence, gangs, involvement in crime and county lines, and child sexual exploitation. Children may be vulnerable to abuse or exploitation in peer groups, the wider community, or online as well as by adults<sup>1</sup>.

Whilst risks relating to radicalisation and terrorism are often extra-familial in nature, they are responded to via West Sussex's Prevent and Channel processes ([www.westsussex.gov.uk/fire-emergencies-and-crime/preventing-extremism-and-radicalisation/](http://www.westsussex.gov.uk/fire-emergencies-and-crime/preventing-extremism-and-radicalisation/)) therefore sit outside the remit of the West Sussex Contextual Safeguarding Steering Group.

## CORE PRINCIPLES

The West Sussex Contextual Safeguarding Steering Group is informed by 'Contextual Safeguarding' principles:

*"Contextual Safeguarding is an approach to understanding, and responding to, young people's experiences of harm beyond their families. It recognises that the different relationships that young people form in their neighbourhoods, schools and online can feature violence and abuse. Therefore children's social care practitioners need to engage with individuals and sectors who do have influence over/within extra- familial contexts, and recognise that assessment of, and intervention with, these spaces are a critical part of safeguarding practices. Contextual Safeguarding, therefore, expands the objectives of child protection systems in recognition"* <sup>2</sup>

In July 2018 the Government's statutory guidance 'Working Together to Safeguard Children' was updated and makes reference to contextual safeguarding as a mechanism to respond to risk and harm occurring outside the family home.

The updated national guidance is clear that the assessment and management of these cases should focus on the **context** of the child.

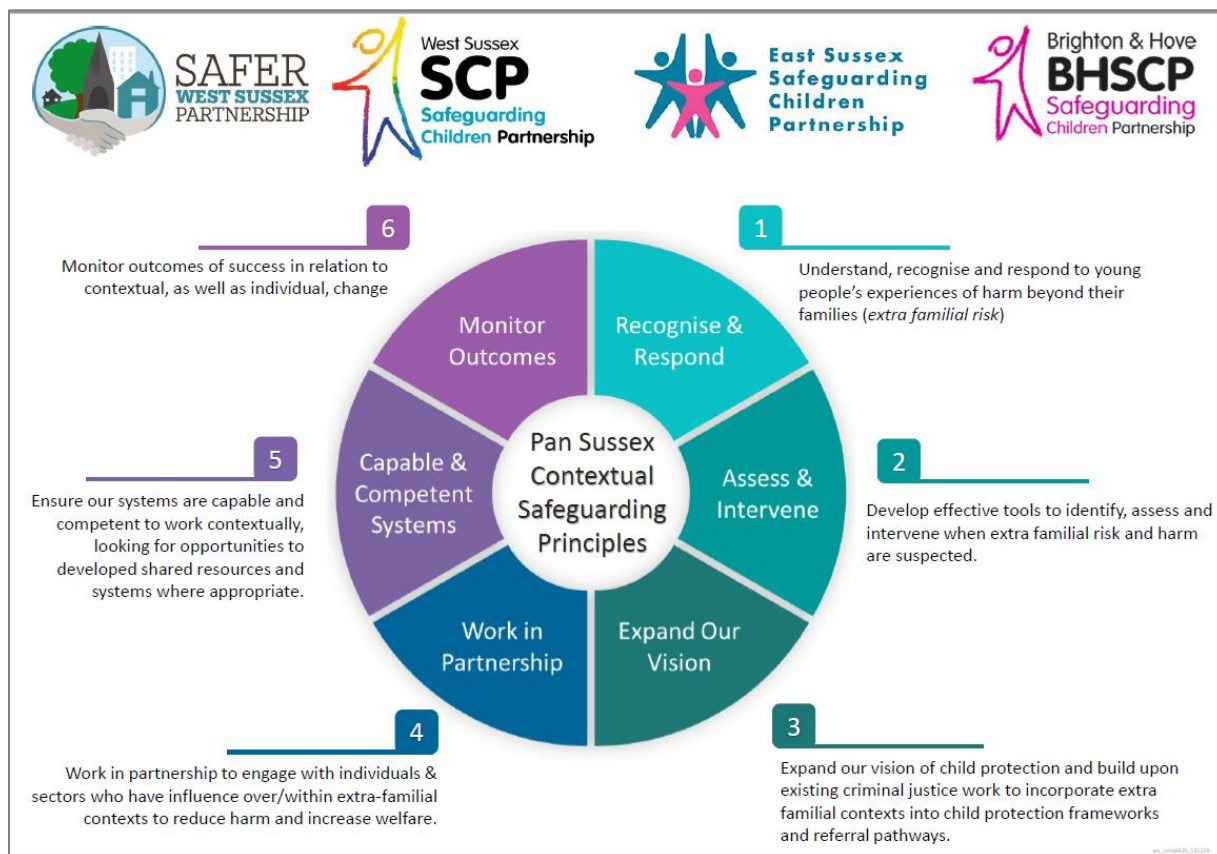
---

<sup>1</sup> See Appendix A for definitions of Extra Familial Risk and Harm

<sup>2</sup> Firmin, C. 2017. *Contextual Safeguarding: An overview of the operational, strategic and conceptual framework* <https://contextualsafeguarding.org.uk/assets/documents/Contextual-Safeguarding-Briefing.pdf>

## PAN SUSSEX PRINCIPLES

Across Sussex agencies have agreed to work in partnership to develop Contextual Safeguarding practice according to the following set of 6 principles:



## PURPOSE

The West Sussex Contextual Safeguarding Steering Group is a multi-agency partnership consisting of key representatives from agencies and authorities across West Sussex.

The purpose of the steering group is to:

- 1) Understand the model of contextual safeguarding and the applicability of its implementation in West Sussex
- 2) Ensure there is co-ordinated and effective multi-agency work to promote contextual safeguarding practice across the County
- 3) Empower front-line practitioners (inc. those working in WSCC Children's Services) to draw upon the tools and skills required to understand, adopt and embed contextual safeguarding practice
- 4) Steer appropriate work to achieve relevant aspects of the West Sussex Child Exploitation Improvement Plan regarding Contextual Safeguarding

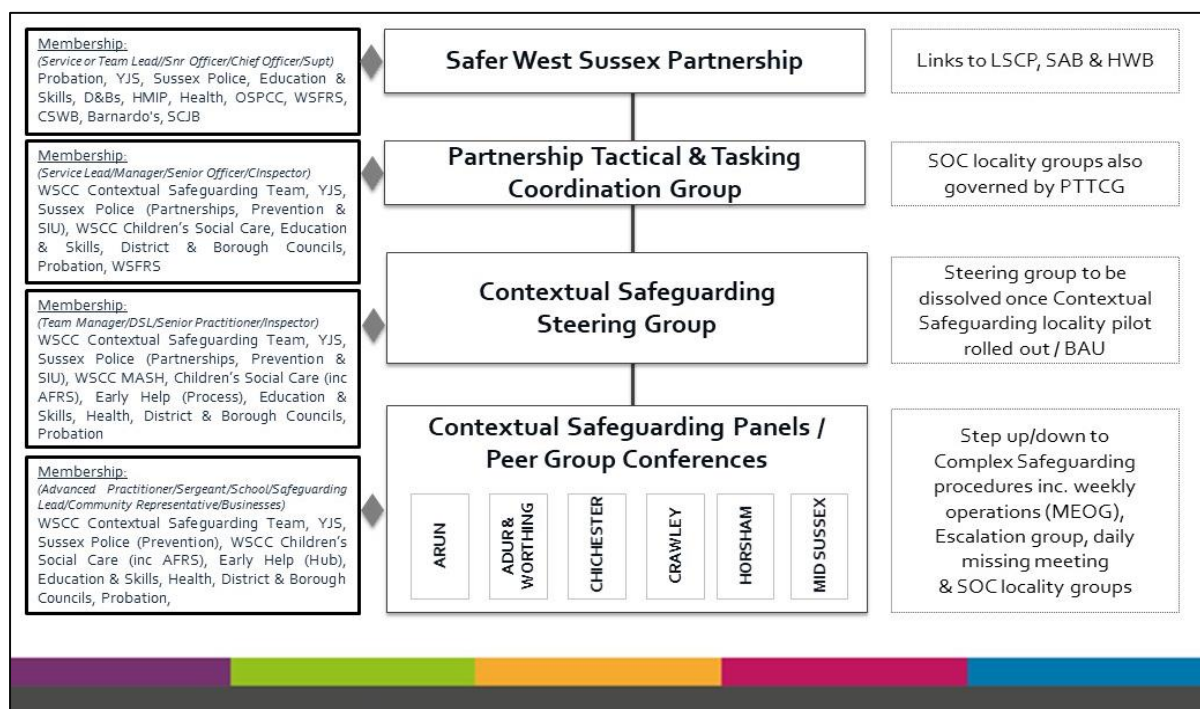
## COMPOSITION

The Steering Group is chaired by the West Sussex Contextual Safeguarding Manager, who also sits on and provides a link across to the Exploitation Subgroup, Violence Reduction Unit (VRU and its steering group) Partnership Tactical & Tasking Coordination Group (PTTCG) and the Safer West Sussex Partnership Executive Board.

Group membership comprises professional representation from the following Agencies/Organisations:

- District/Borough Community Safety / Safeguarding Team(s)
- West Sussex Council - Contextual Safeguarding Team
- West Sussex County Council – Children’s Services Adolescents Team
- West Sussex County Council – Children’s Services Exploitation Coordinator
- West Sussex County Council –Early Help (formerly IPEH)
- West Sussex County Council – Youth Justice Service (YJS)
- West Sussex County Council – Education & Skills
- Sussex Police - Partnerships Manager
- Sussex Police – Prevention Inspectors
- Sussex Police - Missing Person Team
- Sussex Police – Specialist Investigations Unit
- Probation Service
- West Sussex Schools Safeguarding representative
- West Sussex Alternative Provision Centre
- CCG Health representative

The governance, management and operational delivery within the **locality responses to Extra Familial Risk and Harm** are depicted below:



## FREQUENCY OF CONTEXTUAL SAFEGUARDING PANELS

Contextual Safeguarding Steering Group meetings are to be held bi-monthly for the first year, with review after a year of operation.

## INFORMATION SHARING

Government guidance puts preserving life and promoting safety as key considerations when seeking to balance confidentiality and disclosure.

Information sharing about children, young people and adults can be based on the legal authority of:

- a) Children Act 1989
- b) Crime & Disorder Act 1998
- c) Human Rights Act 1998
- d) Care Act 2014
- e) Working Together to Safeguard Children 2018
- f) Data Protection Act 2018
- g) General Data Protection Regulations (GDPR) 2018 Article 6(1)(e)

## TECHNICAL SUPPORT

Technical support is provided by the West Sussex Contextual Safeguarding Team on behalf of the Contextual Safeguarding Steering Group and Safer West Sussex Partnership. Queries should be directed to Jim Bartlett, Contextual Safeguarding Team Manager or Claire Clilverd, Contextual Safeguarding Lead Officer via [communitysafety.wellbeing@westsussex.gov.uk](mailto:communitysafety.wellbeing@westsussex.gov.uk)

## APPENDIX A: EXTRA FAMILIAL HARM DEFINITIONS

### **Child Sexual Exploitation (CSE)**

Child sexual exploitation is a form of child sexual abuse. It occurs where an individual or group takes advantage of an imbalance of power to coerce, manipulate or deceive a child or young person under the age of 18 into sexual activity (a) in exchange for something the victim needs or wants, and/or (b) for the financial advantage or increased status of the perpetrator or facilitator. The victim may have been sexually exploited even if the sexual activity appears consensual. Child sexual exploitation does not always involve physical contact; it can also occur through the use of technology. <sup>3</sup>

### **Criminal Exploitation (CE)**

Criminal exploitation is a form of exploitation where children are groomed into committing criminal acts, sometimes in the context of gangs. Groomers may be adults or similar aged children (peers). Child recruiters are often victims of exploitation themselves. Children recruited into criminal exploitation may be tasked to complete 'test runs' which could include transporting items including (but not limited to) small amounts of drugs or knives or people to other locations.

### **Harmful Sexual Behaviour (HSB)**

Sexual behaviours expressed by children and young people under the age of 18 years old that are developmentally inappropriate, may be harmful towards self or others, or be abusive towards another child, young person or adult" <sup>4</sup>

### **Violent Behaviour**

Violent behaviour can occur in the absence of a young person being exploited where the young person either engages in behaviour that poses harm to others or appears to be a victim of violent behaviour outside the home. Such behaviour will often, particularly when it relates to groups of young people, require a multi-agency response to reduce risk.

### **Modern Slavery (MS)**

Modern Slavery is where a victim is, or is intended to be, used or exploited for someone else's (usually financial) gain, without respect for their human rights. The perpetrators seeking to take advantage of them could be private individuals, running small businesses or part of a wider organised crime network <sup>5</sup>

---

<sup>3</sup> Department of Education., 2017. *Child Sexual Exploitation: Definition and a guide for practitioners, local leaders and decision makers working to protect children from child sexual exploitation*, available at: <https://www.gov.uk/government/publications/child-sexual-exploitation-definition-and-guide-for-practitioners>

<sup>4</sup> (Hackett, S., 2014. *Children and young people with harmful sexual behaviours*. Dartington: Research in Practice.)

<sup>5</sup>Home Office (2017) Modern Slavery Awareness & Victim Identification Guidance ([https://assets.publishing.service.gov.uk/government/uploads/system/uploads/attachment\\_data/file/655504/6\\_3920\\_HO\\_Modern\\_Slavery\\_Awareness\\_Booklet\\_web.pdf](https://assets.publishing.service.gov.uk/government/uploads/system/uploads/attachment_data/file/655504/6_3920_HO_Modern_Slavery_Awareness_Booklet_web.pdf))

<sup>5</sup> West Sussex CSE Procedures High Level flowchart <https://www.westsussexscb.org.uk/wp-content/uploads/CSE-High-Level-Flowchart-PDF-v1.4-2.pdf>



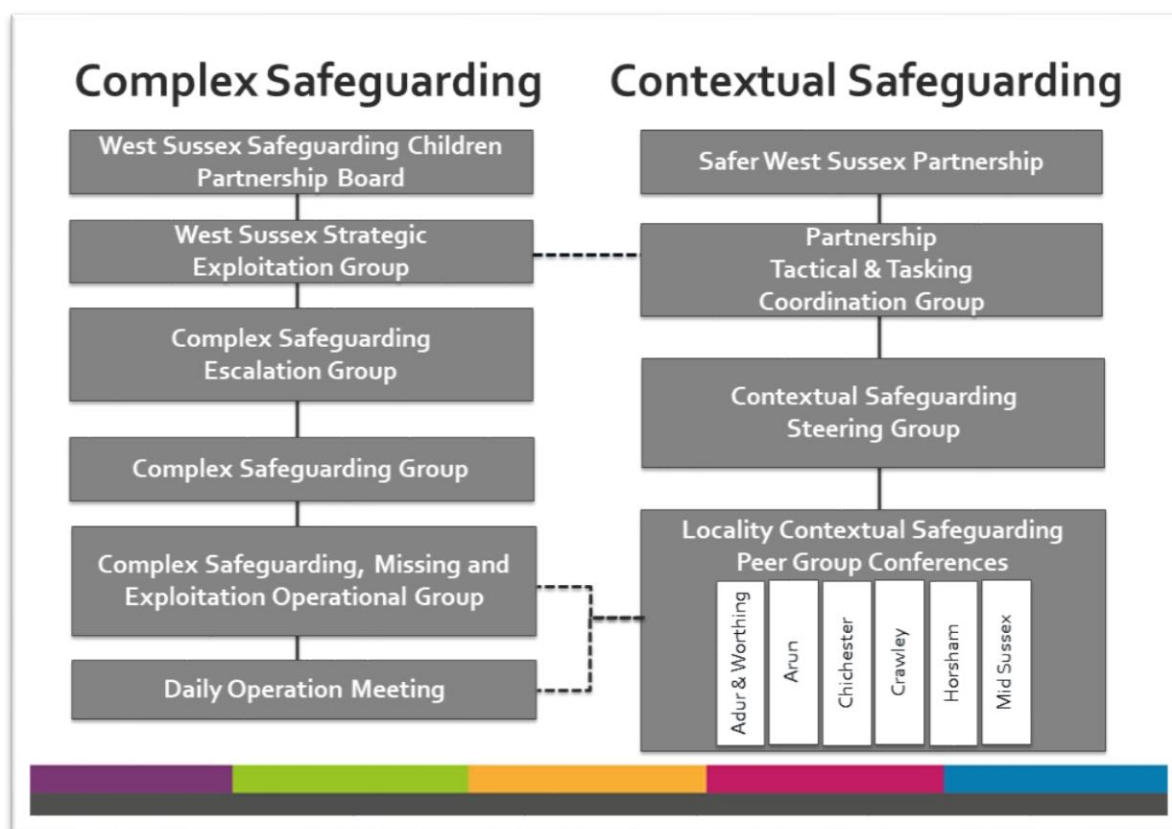
## APPENDIX B: COMPLEX AND CONTEXTUAL SAFEGUARDING FLOWCHART

Across West Sussex, the response to extra familial harm is categorised by risk and vulnerability.

Complex Safeguarding procedures have been established to ensure children and young people who have had at least 1 high-risk missing episode within the preceding 7 days and/or have been risk assessed as experiencing or perpetrating harm whereby risk meets the threshold for statutory intervention and/or multi-agency management are discussed at the weekly Complex Safeguarding Missing & Exploitation Operational Group. This is chaired by West Sussex County Council Childrens Services and is governed by the West Sussex Safeguarding Children Partnership.

Children and young people who have not met statutory threshold for Childrens Services intervention, together with locations and contexts of concern identified by agencies and communities, are managed through locality based, multi-agency Contextual Safeguarding procedures.

The following flowchart depicts the differentiation and areas for potential escalation/de-escalation between the two strands:





**CONTEXTUAL SAFEGUARDING STEERING GROUP SIGN IN SHEET**

<b>Date:</b>		<b>Locality:</b>	
<b>Chair:</b>		<b>Notetaker:</b>	

<b>Name</b>	<b>Agency</b>	<b>Email</b>	<b>Signature</b>



**PARTNERSHIP ACRONYM LIST**

<b>Acronym</b>	<b>Detail</b>
ADC	Arun District Council
AFRS	Adolescent Family Resource Service
ASB	Anti-Social Behaviour
ASBRAC	Anti-Social Behaviour Risk Assessment Conference
AWC	Adur & Worthing Councils
CAMHS	Child & Adolescent Mental Health Service
CBC	Crawley Borough Council
CCE	Child Criminal Exploitation
CCG	Clinical Commissioning Group
CDC	Chichester District Council
CE	Child Exploitation
CF	Children First
CGL	Change Grow Live. <i>Substance Misuse Service commissioned by West Sussex DAWN</i>
CJS	Criminal Justice System
County Lines	<i>Term used to describe gangs and organised criminal networks involved in exporting illegal drugs out of bigger cities into one or more smaller towns in the UK, using dedicated mobile phone <b>lines</b> or other form of 'deal <b>line</b>'</i>
CSC	Children's Social Care
CSE	Child Sexual Exploitation
CSN	Contextual Safeguarding Network <i>Practitioner forum containing information, best practice and guidance regarding implementation of Contextual Safeguarding</i>
CSP	Community Safety Partnership
Cuckooing	<i>Linked to County Lines activity whereby home of vulnerable person is taken over (cuckooed) for the purposes of cutting/storing/distributing drugs</i>
D&B	District & Borough Council
DAAT	Drug & Alcohol Action Team
DAWN	Drug & Alcohol Wellbeing Network
E4S	Education for Safeguarding <i>New Personal Social Health Education (PSHE) curriculum developed for West Sussex schools</i>
ECINS	Empowering Communities Inclusion and Neighbourhood Management System <i>Collaboration software used by multi-agency partnerships, providing secure, encrypted, cloud-based central hub to manage, collaborate, share, task, audit and evidence and intelligence. Currently funded by the Office for Sussex Police &amp; Crime Commissioner</i>
EH	Early Help ( <i>Previously referred to as the Integrated Prevention &amp; Earliest Help service</i> )
GDPR	Government Data Protection Regulations
HDC	Horsham District Council
HWB	Health & Wellbeing Board
IPEH	Integrated Prevention & Earliest Help. <i>Now called Early Help (EH)</i>
ISVA	Independent Sexual Violence Advocate
JTAI	Joint Targeted Area Inspection <i>Carried out by Ofsted, HMI Constabulary and Fire &amp; Rescue Services, the Care Quality Commission, and HMI Probation. Thematic inspections look at how well local agencies work together in an area to protect children</i>

## West Sussex Contextual Safeguarding Steering Group Governance & TOR

---

LA	Local Authority
LSCP	Local Safeguarding Childrens Partnership
MACE	Multi Agency Child Exploitation
MAPS	Multi Agency Problem Solving Meeting
MASH	Multi Agency Safeguarding Hub
MEOG	Multi Agency Exploitation Operations Group
MSDC	Mid Sussex District Council
NEET	Not in Education, Employment or Training
NICHE	Police crime & intelligence records management system
OCG	Organised Crime Group
OSPCC	Office of Sussex Police & Crime Commissioner. Also referred to as PCC <i>Current Police &amp; Crime Commissioner is Katy Bourne</i>
PCSO	Police Community Support Officer
PFIM	Partnership Family Intervention Meeting
PNC	Police National Computer
PTTCG	Partnership Tactical Tasking & Coordination Group
PYO	Prevention Youth Officers <i>Sussex Police resource (formerly Schools Liason Officers)</i>
REBOOT	Personalised, strength-based project for young people aged 11-17 who may be at risk of serious youth violence, gang behaviour and criminal exploitation.
RiP	Research In Practice
ROCU	Regional Organised Crime Unit
SAB	Safeguarding Adults Board
SARC	Sexual Assault Referral Centre In Sussex also referred to as <i>The Saturn Centre</i>
SSCJB	Surrey & Sussex Criminal Justice Board
SECAMB	South East Coast Ambulance Service
SiE	WSCC Safeguarding In Education Team
SIU	Safeguarding Investigation Unit <i>Sussex Police team</i>
SOC	Serious Organised Crime
SPFT	Sussex Partnership Foundation Trust
SWSP	Safer West Sussex Partnership
TTCG	Tactical Tasking & Coordination Group
UoB	University of Bedfordshire <i>Academic centre leading the development of Contextual Safeguarding nationally</i>
WORTH	Ways Of Responding Through Health <i>West Sussex Domestic Abuse Service</i>
YMCA Downslink	<i>Registered charity working to transform communities across Sussex and Surrey so that all young people and families can belong, contribute and thrive</i>
YJS	Youth Justice Service
VRU	Violence Reduction Unit